

The series of vibrating-channel loss in weight DVM has been designed to automatically and precisely dose masterbatches, additives, plastic granules and flakes.

The unit system consists of:

Painted steel supporting frame,

Weighing system with load cells for material weighing;

A high-precision vibrating system operated by an electric motor; the motor transmits the vibration to a duct that dose the product constantly;

Storage hopper for materials;

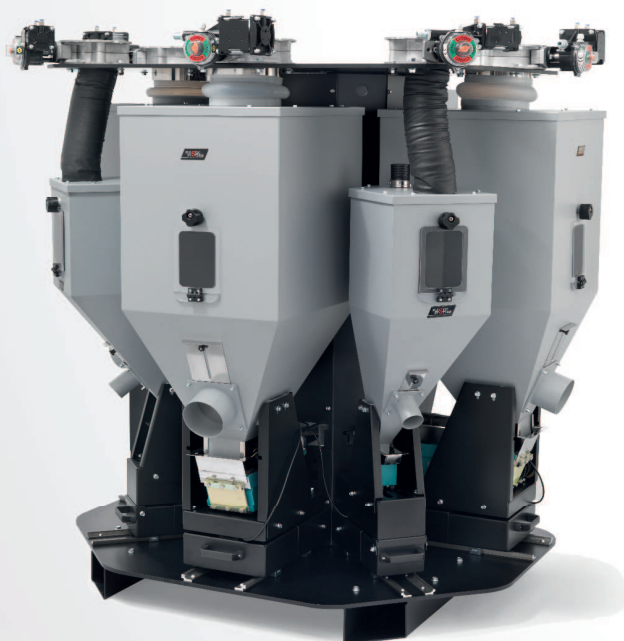
Pneumatic slide gate;

The system is controlled by a Siemens S7 300 PLC with weighing board and a color touchscreen operator interface.

There are two models with different configurations:

Single station with vibrating channel from 100 to 300mm for capacities of 100 kg/h.

Multi-station from 2 to 5 components with 50 to 200 mm vibrating channels for capacities from 100 to 5000kg/h.



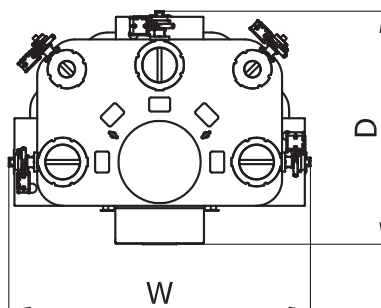
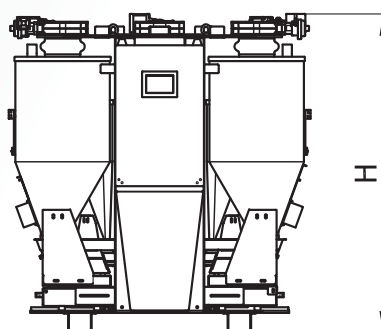
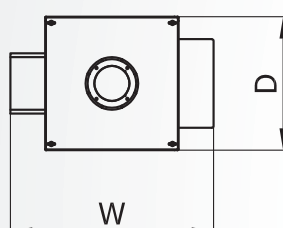
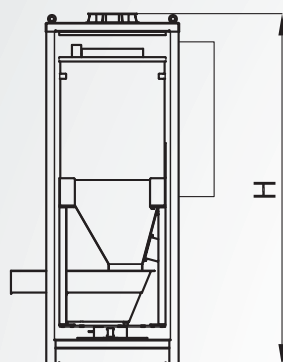
5 components dosing station



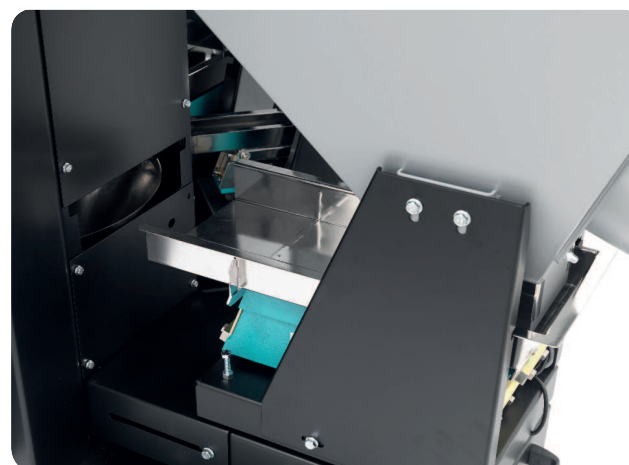
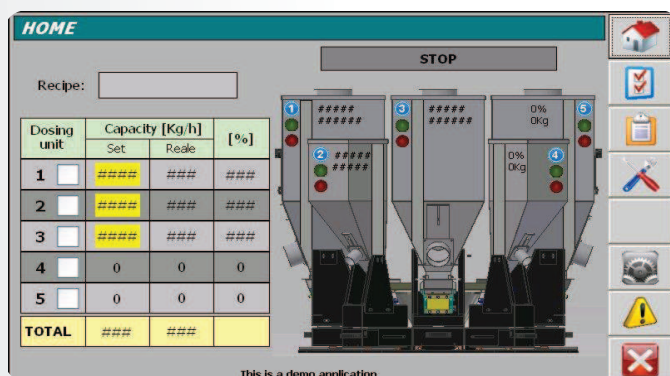
ADDED VALUE:

- Storable recepies.
- Easy and quick color change thanks to a complete accesibility to the unit.
- Custom-made weighing system.
- Ideal for installations on twin-screw extruders.
- The weight-in-loss system shows the actual consumption and the composition of the recepie.
- "Profibus" and/or "Profinet" interface.

Loss-in-weight vibrating-channel dosing



1 component dosing station



TECHNICAL DATA		DVM1	DVM5
Throughput per channel	kg/h	2500 (300mm channel)	100 (50mm channel) 1000 (150mm channel) 1350 (200mm channel) 2500 (300mm channel)
Maximum N° of materials		1	2-5
Hopper volume	dm³	300	35 (50mm channel) 160 (150mm channel) 160 (200mm channel) 300 (300mm channel) 45 (50mm channel)
Shaker power	W	500	200 (150mm channel) 200 (200mm channel) 500 (300mm channel)
Voltage/Frequency	V/Hz	230/50-60	230/50-60
Rumorosità	dB(A)	<80 N° massimo di materiali	<80 Potenza vibratore
Dimensioni WxDxH	mm	1160x765x2010	1725x1325x1650