

The automatic manifolds AMM series are the ideal solution for the distribution of plastic materials from storage area. There are four models with pipes to machines of 40 - 50 - 60 - 70 mm diameter.

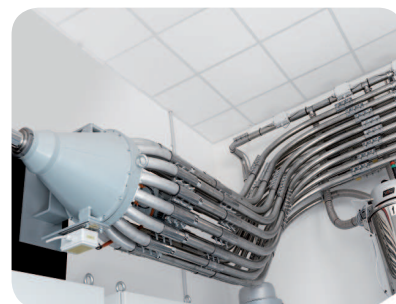
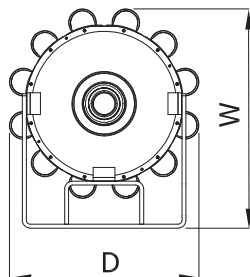
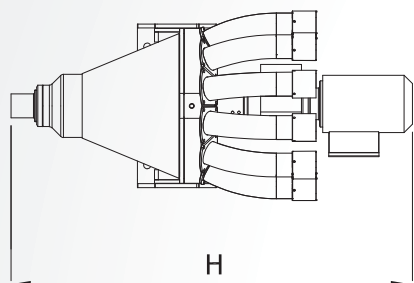


#### TECHNICAL SPECIFICATIONS:

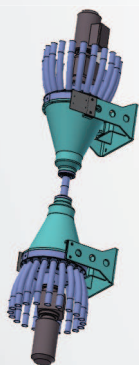
- Control with PLC Siemens and a touch screen interface. The control unit manages up to 4 modules.
- Gearmotor with a built-in brake system.
- Components made of wear-resistant stainless steel.

#### ADDED VALUE:

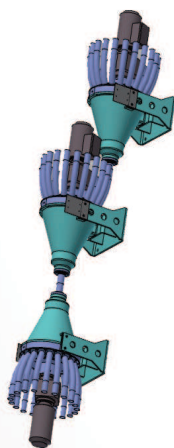
- **RELIABLE**  
The precision of the mechanical parts, the control with PLC and its sensors guarantee an absolute reliability.
- **NO "GROUND" FOOTPRINT AND EXPANSIONS**  
Its special design, modularity, and the possibility to expand its functions result in an innovative product in this field.
- **SAFETY**  
The moving parts are inside the manifold: no risks for operators.



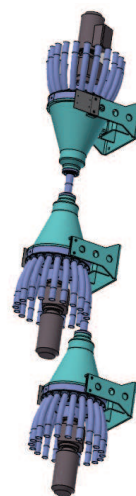
### Possible configurations



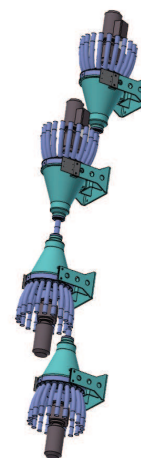
2 Manifold



3 Manifold



3 Manifold



4 Manifold

TECHNICAL DATA		D.40	D. 50	D. 60	D. 70
Connections	N°	20	16	12	12
Voltage/Frequency	V/Hz	400/50-60	400/50-60	400/50-60	400/50-60
Total power	KW	0.15	0.15	0.15	0.15
Dimensions WxDxH	mm	544x459x1016	548x466x1016	550x469x1016	555x480x1016
Weight	kg	160	160	160	160