

The material receivers of the TMM series are made of stainless steel and those of the TMX series with a central pyrex-glass body. They can be used with three-phase hopper loaders of the PD series.

There are 8 models from 2 dm<sup>3</sup> a 100dm<sup>3</sup>.



#### TECHNICAL SPECIFICATIONS:

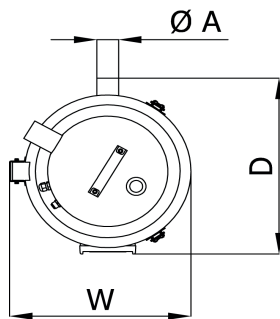
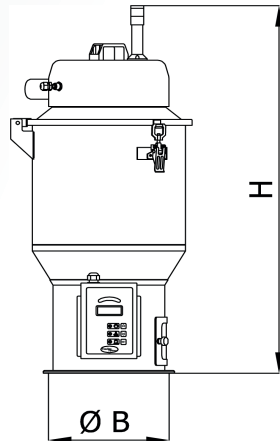
- Stainless steel structure.
- Hinged cover.
- High-depression operation.
- Automatic cleaning of the filter.
- Discharge valve and wear-resistant gasket.
- Air vent with door and built-in metal filter.

#### ACCESSORIES:

- Pneumatic discharge.
- Proportional valve.

#### ADDED VALUE:

- Easy to use.
- Easy cleaning and maintenance.
- Safety and reliable.
- Quick installation with a 360° orientation
- Alarm warning device



TMM receiver



TMX receiver

TECHNICAL DATA		TMM2	TMM4	TMX4*	TMM5	TMX8*	TMM10	TMM25	TMX25*	TMM50	TMM100
Capacity	dm <sup>3</sup>	2	4	4	5	8	10	25	25	50	100
Diameter receiver (B)	mm	210	210	210	280	210	280	280	280	280	280
Diameter material inlet	mm	40	40	40	40/50	40	40/50	50/60	60	60/70	70/89
Dimensions	W	339	339	275	339	276	568	414	359	414	568
	D	268	268	308	413	308	550	511	391	511	550
	H	505	586	686	606	811	753	915	956	1085	1192
Weight	Kg	7	8	8	10	11	12	15	15	17	25

\* Pirex cilinder version.